



ATHENA
Access to cultural heritage
networks across Europe

eContentplus



דיגיטל הריטג, ישראל
Digital Heritage, Israel

EVAMinerva 2010



ATHENA lessons learnt

1. The importance of the workflow

Maria Teresa Natale
Italian Ministry of cultural heritage, ICCU

Piergiacomo Sola
Amitiè, Italy



What's behind this screenshot?

Listen to a story...

Mask of Gu, the spirit wife - Mozilla Firefox

http://dashboard.europeana.sara.nl/portal/record/08502/CE8F606AB50B776C80580B67419682E38B617AB6.html?query=europeana_collectionName%3A08502

Meest bezocht Europeana SIP Creator Aan de slag Laatste nieuws europeanalocal.avinet... Europeana SIP Creator W List of ISO 639-1 code... Πανόπτης: Πανόπτης: W ISO 3166-2 - Wikipedia

Mask of Gu, the spirit wife


My Europeana About us Communities Partners ThoughtLab Choose a language

Search europeana_collectionName:08502* Advanced search

Matches for: europeana_collectionName:08502*

Item details

Return to results share



Mask of Gu, the spirit wife

Title: Mask
Mask of Gu, the spirit wife

Date: Late 19th – early 20th century [Create]

Description: Repository/Location: Israel Museum, Jerusalem

Format: D: 11 cm; H: 46; W: 15; Wood

Rights: Israel Museum, Jerusalem; Photo © The Israel Museum, Jerusalem [Resource]; The Arthur and Madeleine Chalette Lejwa Collection, bequeathed by Madeleine Chalette Lejwa, New York, to American Friends of the Israel Museum

Data provider: Israel Museum, Jerusalem

Provider: Athena; Europe

[Less](#)

Identifier: Item 224850 [Metadata]; local (default) B00.0660

Subject: Africa; Art; Mask

[View in original context](#)
Opens in a new window

Related content:
Items
Mask
Mask
Mask
[See all related items](#)

Actions:
[Add a tag](#)
[Save to My Europeana](#)
[Login](#) | [Register](#)

http://dashboard.europeana.sara.nl/portal/record/08502/CE8F606AB50B776C80580B67419682E38B617AB6.html?query=europeana_collectionName:08502*<tab=<start=68startPage=1&view=table&pageId=brd#



ATHENA

ATHENA is

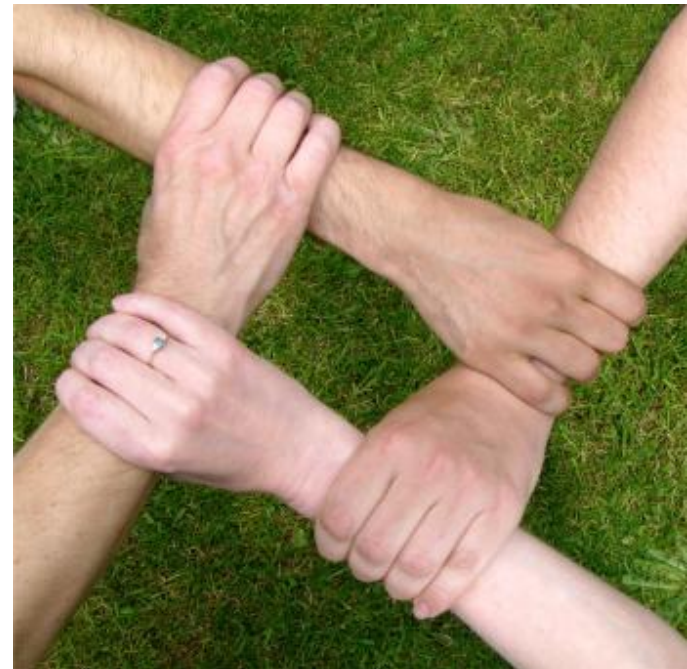
a network of good practices financed by
programme *eContentplus*

a 30 month project (2008-2011) coordinated
by MiBAC

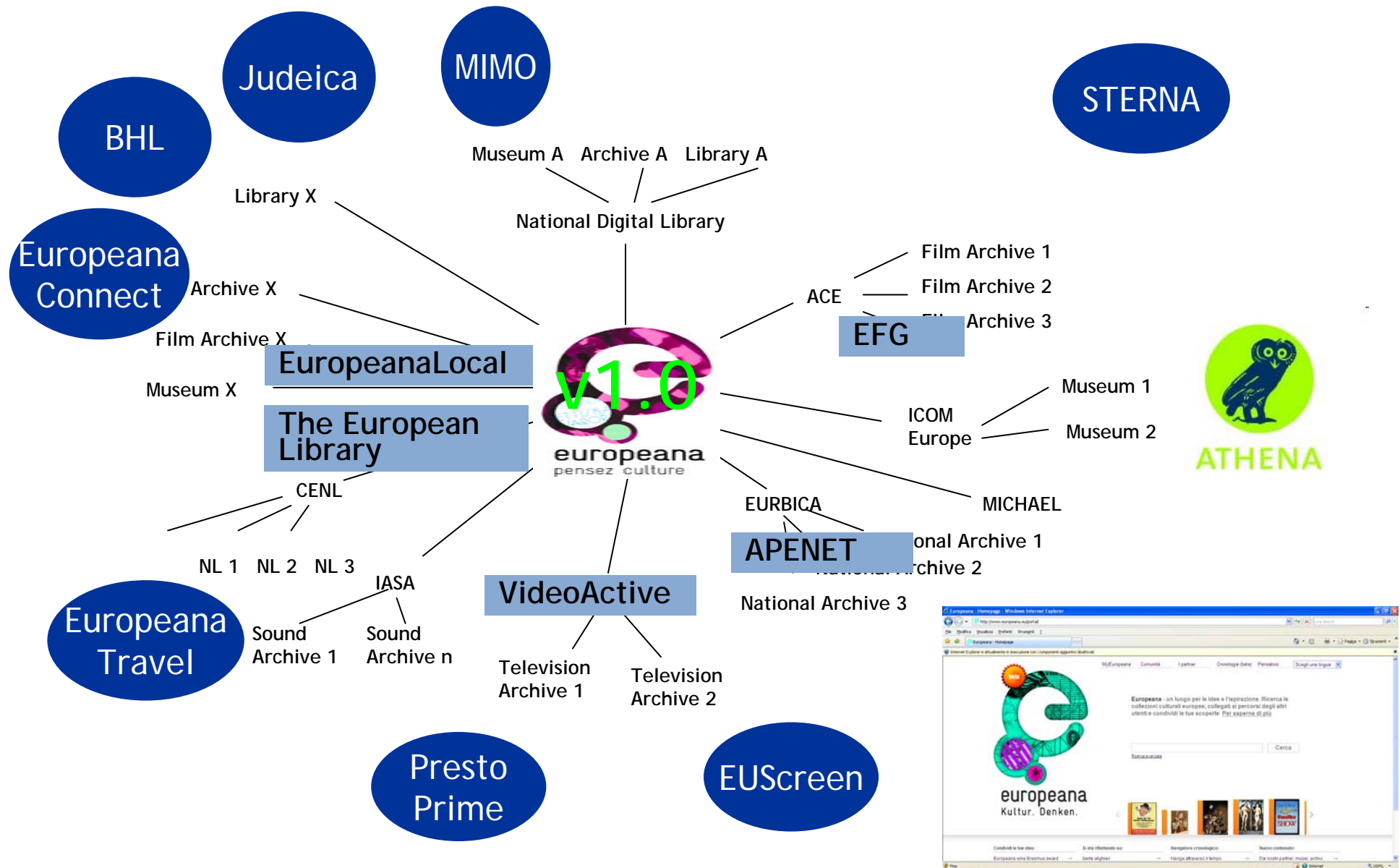
a result of the MINERVA project

ATHENA involves:

20 EU Member States, Israel, Russia
109 museums and other important
cultural institutions in Europe
plus new entries



The Europeana Family





ATHENA

National contact points



Belgium
Bulgaria
Cyprus
Czech Republic
Estonia
Finland
France
Germany
Greece
Hungary
Israel
Italy
Latvia
Lithuania
Luxembourg
Malta
The Netherlands
Poland
Romania
Russia
Slovak Republic
Slovenia
United Kingdom
Europeana

Trait d'union between
content providers and the
organisation and technical
management



ATHENA
Access to cultural heritage
networks across Europe

ATHENA Survey on Standards

- Content provider information
- Collection description
- Digital object metadata
- Information scheme(s) (metadata)
- Intellectual Property Rights (including copyright)
- Geographic name terminology and co-ordinate standards
- Date format and time period terminology
- Subject terminology
- Person and organisation terminology

By ATHENA WP3





ATHENA
Access to cultural heritage
networks across Europe

Survey conclusions a big mess

- European museums have different approaches in cataloguing, in digitisation, in the use of metadata standards
 - Museum metadata standards are not much used by the other domains
 - Museums use other domain metadata standards
 - Dublin Core is a popular metadata scheme
 - A significant number of museums (and organisations from other domains) use an in-house developed metadata schemes
 - About half of collections are using adapted standards
- By ATHENA WP3



ATHENA
Access to cultural heritage
networks across Europe

Complexity of museum objects

Which standard to use in ATHENA?

... with objects cooperation is more difficult ...



Painted 1784



Not painted ...
but „produced“ 1540



Painted 1769



Not painted ...
not produced ...
But: „first described“ 1863



Painted 1739



Not painted ...
Produced (when ??)
More important: „used“ around 530

EVENTS



ATHENA
Access to cultural heritage
networks across Europe

Towards standardisation

LIDO Basics: XML Harvesting schema

- LIDO = **L**ight **I**nformation [for] **D**escribing **O**bjects;
- Uses *CIDOC Conceptual Reference Model* (CRM);
- Has **Display** elements and **Indexing** elements;
- Full support for **Multilinguality**;
- Aligned to Getty's *CDWA Lite* schema;
- Informed by *SPECTRUM*;
- In 'use' in **BAM Portal**.




LIDO Top Level Elements

- Identifier
- Category
- **Object Classification:**
 - Object / Work Type (mandatory)
 - Classification
- **Object Identification:**
 - Title / Name (mandatory)
 - Inscriptions
 - Repository / Location
 - Record (mandatory)
 - State / Edition
 - Object Description
 - Measurements
- **Event:**
 - Event Set
- **Relations:**
 - Subject Set
 - Related Works
- **Administrative Metadata:**
 - Rights
 - Record (mandatory)
 - Resource



Ingestion Plan

AGREEMENT AUTHORIZATION	PUBLISH PROCEDURE	UPLOAD	COUNTRY	DATA PROVIDER (institution , aggregator)	COLLECTION NAME	TECHNICAL CONTACT PERSON	E-MAIL	APPROXIMATE NUMBER OF DIGITAL OBJECTS	OBJECT TYPES (in sound , vi	
		Danube	BE_007	RMCA	Photograph collection database			100000	text/images	
OK	OK (14006 ESE items). Alcuni items sono stati cancellati perché non andavano bene per europeana		27952 LIDO items	BE_008	KIK-IRPA	Photographic collection of art objects belonging to the other Belgian participating scientific institutions.	Erik Buelinckx	erik.buelinckx@kikirpa.be	14044	text/images
OK		Danube	BE_009	RMAH	Museum collection database	Chris De Loof	c.delooof@kmg.be	613 objects	images	

Today: 270 collections

Ingestion plan: the workflow of the collections until the publication into Europeana. Will they all be published in the European portal?

The collections' quality



The cases

- Collections ready to be ingested (very few)
- Collections with low quality images
- Collections with metadata to be corrected
- Collections not yet fully digitised
- Technical problems
- Management problems
- Waiting for IPR clarifications
- Duplications with other projects
- Need to be ingested first in the national aggregator
- ...

Europeana Data Provider Agreement with Europeana
(ready in May 2010)

Europeana Data Aggregator Agreement with Europeana
(ready in May 2010)

Long discussion among all stakeholders on

- Metadata reuse
- Non commercial reuse

Content Providers' Authorisation to ATHENA to deliver content to
Europeana



ATHENA

Ingestion system

HOME MY PROFILE ADMINISTRATION IMPORT OVERVIEW DATA REPORT LOGOUT

Overview

An overview of all the imports and items per organization and per uploader.

Imports

Organization: NTUA

Imports by user: AthenaAdmin

View all available actions by clicking on an import name

photos.xml	950,000/2010-14-07	
response0.xml	134K, 2007/2010-15-09	
08.xml	134K, 1507/2010-14-28	
mb0.xml	331K, 0307/2010-20-07	
SCCM_102.zip	307K, 0807/2010-13-08	

Displaying imports 1 - 5 of 14

previous next Jump to page go

Items

(Athena Admin, NTUA)

Filter by: photos.xml

Name	Created
Photos Disk	photos.xml 01/02/2010 14:07

Displaying items 1 - 1 of 1

previous Jump to page go

Cultural Heritage metadata aggregation
Organization, user and records management
Alignment of proprietary schemata
Export (XML, XSLT) & publish (OAI-PMH)

By
NTUA



Ingestion system

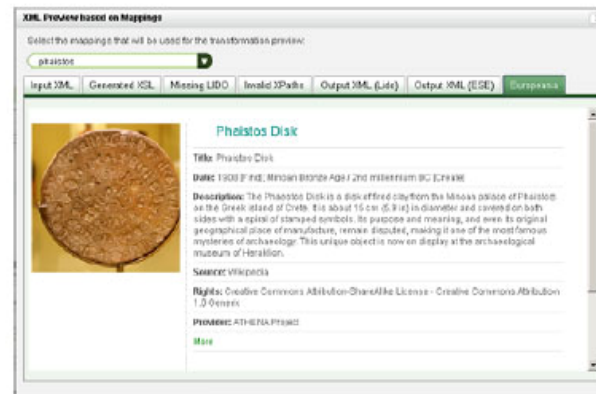
Friendly interface

Easy to learn

Still in progress

Bugs

XML analysis, statistics & preview



Visual mapping (XSL) editor

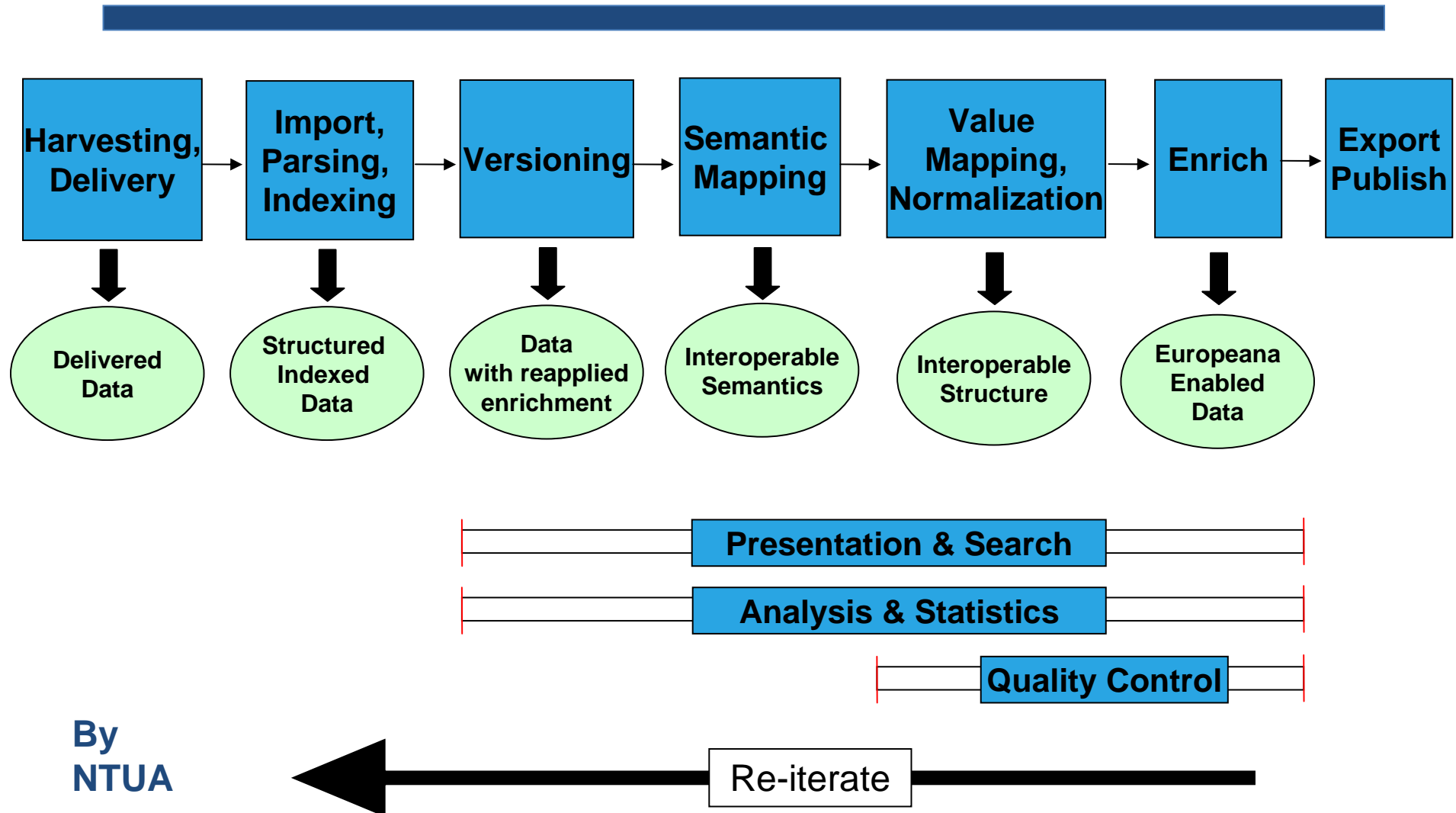


XPath & constant value mappings, value concatenation
String value transformation functions based on XSL

Complex condition editor

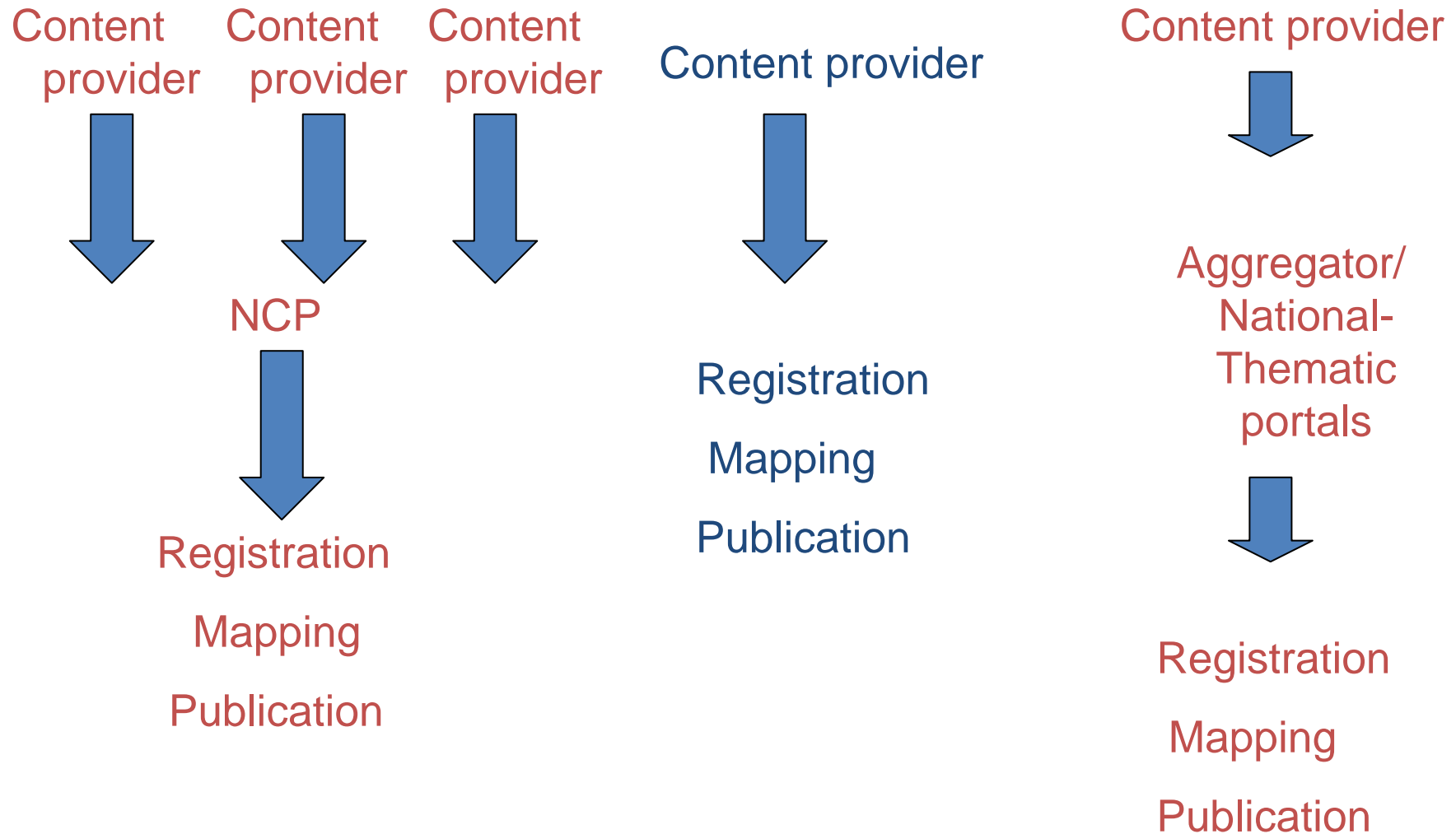
By
NTUA

Ingestion system





Different cases





Training

PERIODIC TRAINING WORKSHOPS



VIDEO TUTORIALS

Home > Training > Videos > TRAINING WORKSHOP, ROME, 18 JANUARY 2010: GORDON MCKENNA, USING LIDO
Training Workshop, Rome, 18 January 2010: Gordon McKenna, Using Lido
This video was realised during the [ATHENA workshop](#) held in Rome the 18 January 2010.
Video authors: STEA.



TESTS (TEST SERVER / FINAL SERVER)



ONLINE TRAINING MATERIAL

Documents
Presentations
Guidelines
Videos
'Worksheets



TECHNICAL HELP-DESK
managed by WP3 and WP7 experts
targeted at content providers



Errors

Mapping errors

Thumbnail blurring

Shown at / Shown by

Images caching failed

Repetitions of items

Confusion in the names of content providers

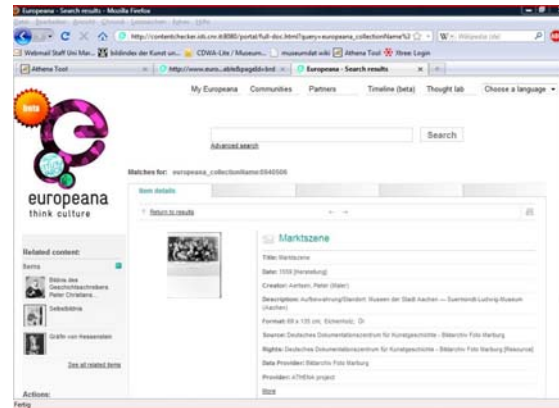
Difference from ATHENA previews

Europeana content checker

Items duplications

New element europeana:dataProvider

Ecc.



Hundreds of
conversations

“G. asked me to fix dcterms:title and change it to dc:title, map dc:source to europeana:dataProvider, leave dc:description as it is. I cannot change the display order of dc:extent. Dc;Type was another issue I now mapped it to dc:subject because this fits better. I tried to differentiate between dc:type and dc:subject but currently this information is all mapped to dc:type in the input file and there is no pattern that I could filter for. Not all items contain a true dc:type as first element in their metadata”.



Stakeholders in the process

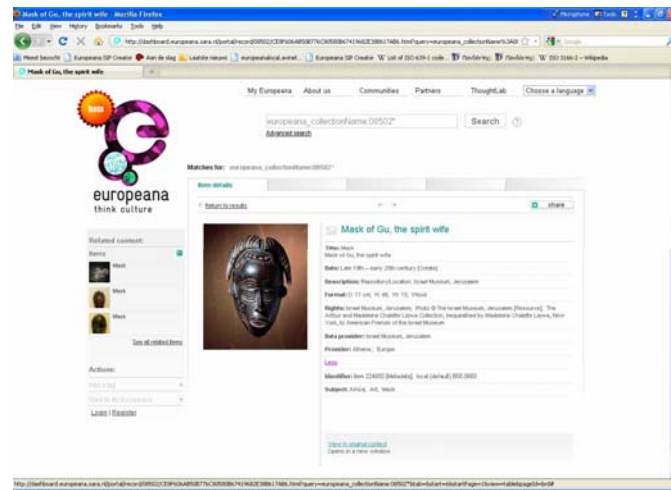
- Technical team
- Metadata experts
- Ingestion plan coordinator
- Management
- Europeana Team
- Content providers

**Where is and how
to solve the problem?**





Houston We have lift off!!!!



10 November 2010

2 millions ATHENA data
in Europeana / half way



Testimonials:

“How exciting to see it live! All of everyone's work is coming together. Well done”

“thank you for all your efforts and hard work - we are absolutely thrilled to be in Europeana”

“I would like to thank to the Europeana Ingestion Team”

“great news with the publication, congratulations and thank you for all you hard work. Their organisations should be the judges, within the limits of the systems, as to the quality of the results”



We are in Europeana

Museum-digital, Germany

Museum of History of Kazan University, Russian Federation

RybinskStateHistory,ArchitectureandArtMuseum-reserve, Russian Federation

Institute for Cultural Memory(CIMEC), Bucharest, Romania

Chouvashia State Art Museum, Russian Federation

Petofi Literary Museum, Hungary

Ministry of Culture of the Republic of Slovenia

Bibliotheksservice-Zentrum Baden Wurttemberg, Germany

Royal Institute For Cultural Heritage, Belgium

Hellenic Maritime Museum, Greece

ArtPast, Italy

Israeli Museum, Israel

FotoMarburg, Germany





Conclusions

- Respect technical guidelines in digitisation projects
- Image quality is very important
- Training, training, training...
- Help desk: it is strategic!
- Human interoperability: cooperation and exchanges of good practices between ICT technicians and cultural professionals



Open to new museums

eContentplus




ATHENA
Access to cultural heritage
networks across Europe

**EUROPEAN
MUSEUMS!**
**ATHENA IS YOUR
BRIDGE TO
EUROPEANA!**

**ONLY THOSE
WHO SHOW
THEMSELVES
WILL BE SEEN**

www.athenaeurope.org
info@athenaeurope.org

 europeana
project group
member
www.europeana.eu

New museums who want
to publish their digital objects
into Europeana are
welcome!!!

ATHENA can be the right
bridge!!!

Cooperation with other European projects

ATHENA cooperates with other ongoing trans-European projects to fully support the development of Europeana:



In order to

- avoid duplications
- steer the content providers to the right project according to its needs
- share the project results
- exchange good practices
- coorganise dissemination events



ATHENA

More information

<http://www.athenaeurope.org>
info@athenaeurope.org